

TAINAN

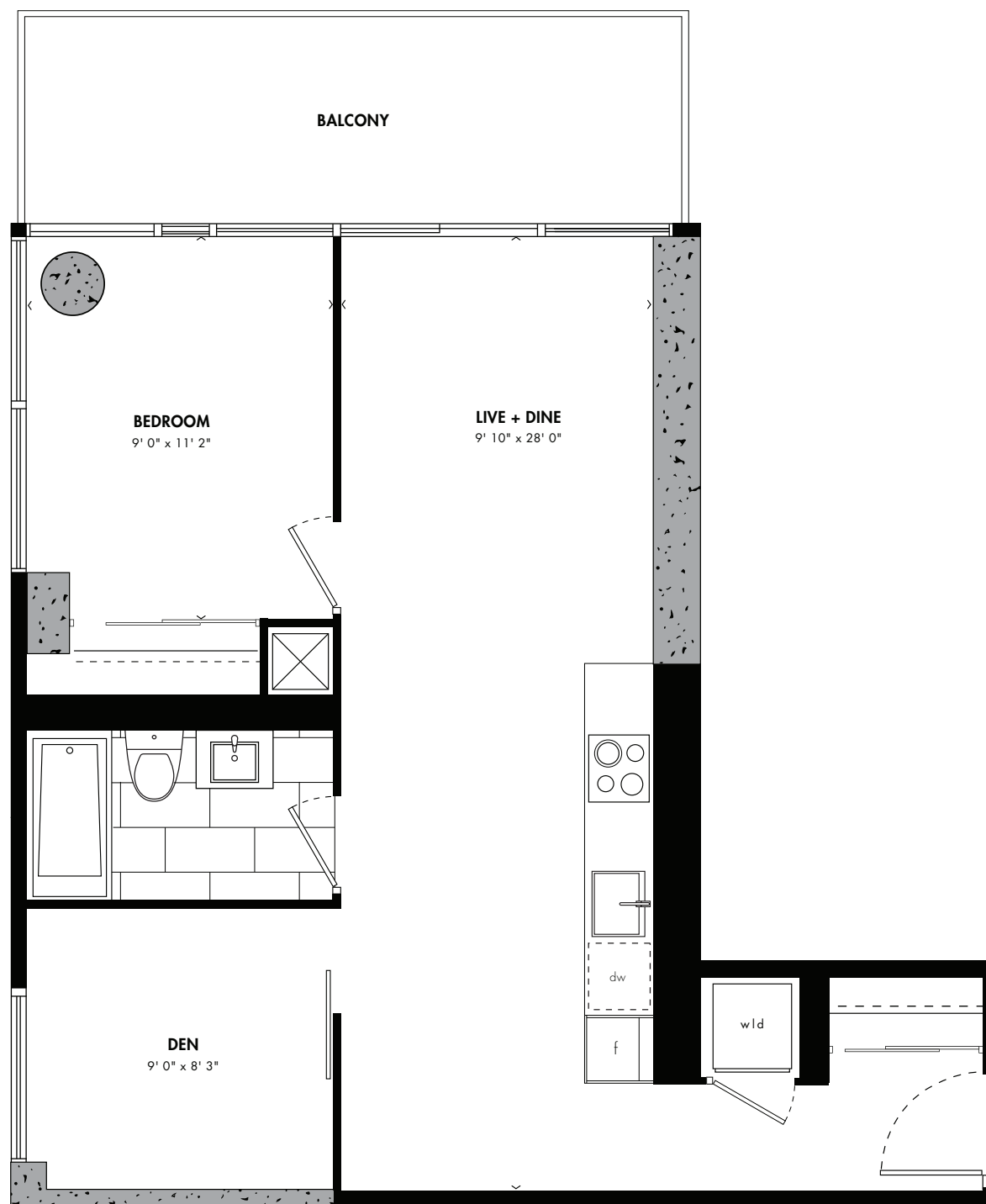
unit 09

ONE BEDROOM + DEN

645 SQ. FT.

PLUS 117 SQ. FT. EXTERIOR SPACE

Window(s), balcony and balcony door may shift in size and/or location. Actual floor area may differ from stated floor area. All prices, sizes and specifications are subject to change without notice. E.&O.E.

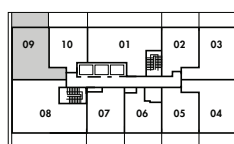


CEILING HEIGHT
FLOORS 10-21: 9'
22ND FLOOR: 10'

FLOORS 10-22

RICHMOND STREET EAST

ONTARIO STREET



^
N

TAINAN Traditional culture continues to thrive in Tainan, the oldest city in the country. Inside temples that are hundreds of years old, people bwah bwey (cast moon blocks) to determine the best course of action, just as their ancestors did when the temples first opened. Outside, Tainanese are fastidious about food, and a number of dishes are exclusive to the region but renowned all over the country.

